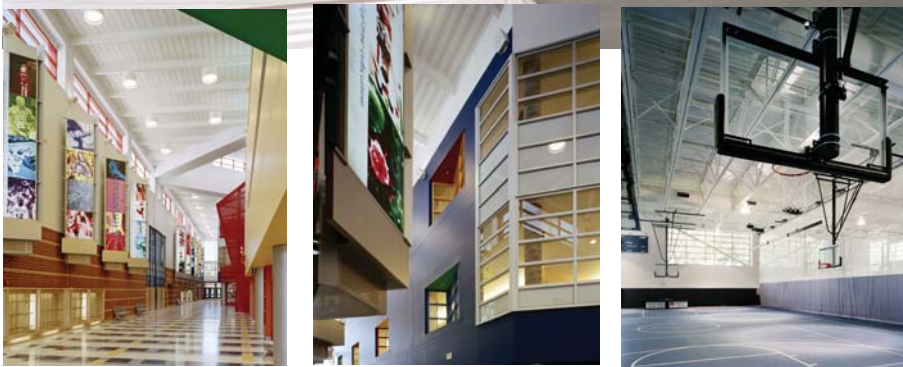


## RIBBON CUTTING CEREMONY FOR SPORT & MEDICAL SCIENCES ACADEMY



The 158,000 square-foot building became home to 725 students when it officially opened on August 25, 2008, for the 2008-2009 school year. Designed by DuBose Associates Architects, the \$71 million project, located in Hartford, CT is considered a major success. "With the help of the construction manager and architect, SMSA is a landmark project completed under budget while exceeding its Program Goals," said Joe DeSanti, Program Director for Diggs Construction. While meeting the program goals:

- The project was \$5 million under budget.
- 43% of the workforce were women and minorities.
- 30% of the workforce were Hartford residents.



The facility is equipped with nine science labs, a broadcasting studio, a full size gymnasium and a field house with a rock-climbing wall. The theme of this magnet school is to interest students in pursuing higher education to study all fields related to sports: medicine, physiology, broadcasting, management, research, nutrition and fitness.

## RECENT PROJECT HONDA PARTS DISTRIBUTION WAREHOUSE EXPANSION



The 153,000 square-foot addition includes a super flat slab on grade and a 32,000 square-foot mezzanine with a men's and women's gang bathroom, 20 additional truck bays and a loading dock area with dock seals, dock levelers and hydraulic truck restraints. Designed by Milton Lewis Howard Associates, Inc., the \$16 million project is located in Windsor Locks, CT.

## NEW LEED A.P. ON OUR STAFF



In January 2009, Kyma Harrison became a LEED Accredited Professional. Along with her current duties as Controls Manager's Assistant, she will also serve as Diggs Construction's LEED Coordinator. Her role is to assist the program manager in managing the LEED consultants and quality assurance concerning LEED certification during pre-construction and construction phases.

Kyma monitors green ideas for implementation of energy conservation and sustainable initiatives for design projects; she takes on the role of Leadership in Energy and Environmental Design (LEED). Congratulations Kyma!

# Construction In Progress

5th Ward Office Building  
Houston, TX

Annie Fisher Montessori/STEM School  
Hartford, CT

Bartle Hall North Dock  
Kansas, MO

Bloomfield High School  
Bloomfield, CT

Capital Preparatory Magnet School  
Hartford, CT

Fire Station # 35  
Kansas City, MO

Honda Warehouse Expansion  
Windsor Locks, CT

Mary M. Hooker Environmental Magnet School  
Hartford, CT

Richard J. Kinsella Magnet School for Performing Arts  
Hartford, CT

The Collective at Baldwin Park  
Houston, TX

University High School of Science and Engineering  
Hartford, CT

## MESSAGE FROM THE OWNER

“Our team is your team. Your goals are our goals.”



This maxim expresses the principle that has made Diggs Construction successful. In an industry where competence is a commodity, Diggs Construction has a reputation as a firm for being both pragmatic and innovative. Whether the delivery method is construction management, program management or contract administration, we are your partner in the community, your team member in the conference room and your leader out in the field. We think, and then we act. We listen, and then we respond.

Partnering Leadership Accountability Innovation Diversity

## MWBE/EEO Program

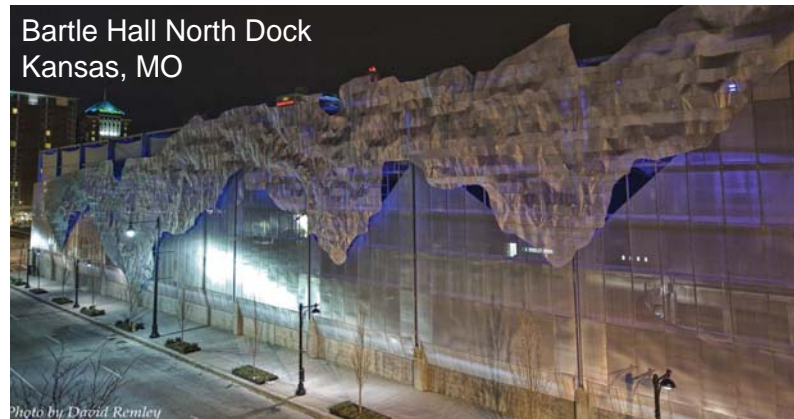
Diggs Construction is very committed to providing economic opportunities to the businesses and the local workforce in the communities we work in. We strive to support the advancement of local Minority Business Enterprises and the involvement of the local workforce participation. We have an excellent track record of managing a Minority Set-Aside Program through our involvement as Program Manager for the Hartford School Construction Program.

### MWBE Accomplishments:

- Over \$52 million of work for the City of Hartford School Construction Program was awarded to MWBE firms on a first tier basis.
- Over 75% of the \$52 million was awarded to firms in the Hartford or Greater Hartford area.
- The workforce performing the work in Hartford is made up of 34% Minority contractors and over 22% Hartford residents.

Diggs is very proud of what has been accomplished for local businesses and the workforce in Hartford through the City's School Construction Program.

## Bartle Hall North Dock Kansas, MO



Diggs Construction, LLC is providing Construction Management, Observation Services for the renovation of the Bartle Hall North Dock. This project included the demolition of the entry and exit ramps and construction of new entry and exits including loading dock reconfiguration, exit stair reconfiguration and a new screening structure. The value of this project is approximately \$7.5 million.

### Our Mission:

*Diggs Construction partners with its clients by providing professional construction services that form a relationship built on trust and teamwork, which results in successful projects.*



University High School of Science and Engineering  
Hartford, CT